

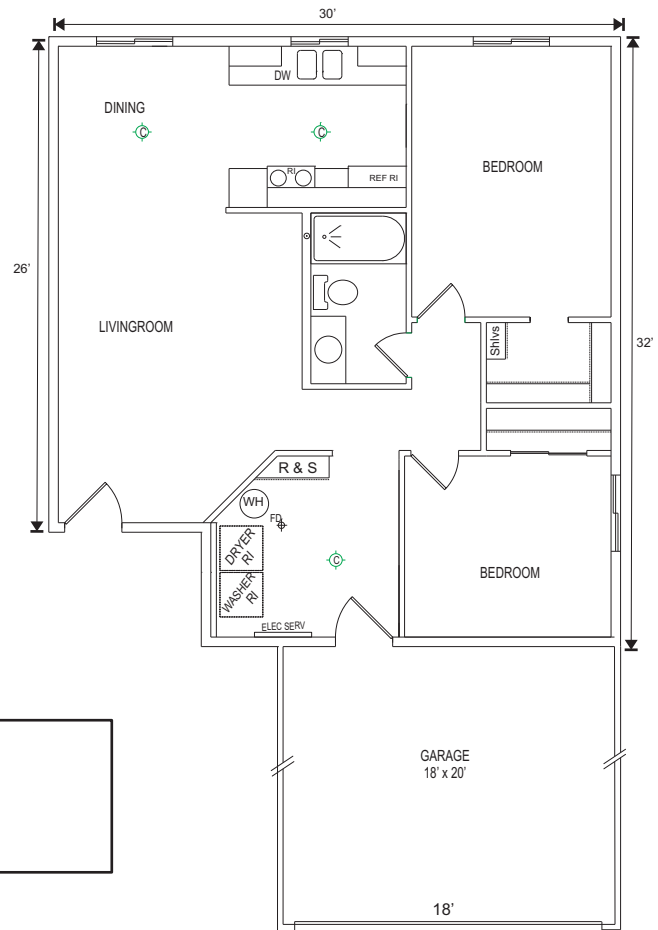


The Today Series "Bayfield"



Bayfield Twinhome shown with optional front window and glass in the front door.

Base Plan & Elevation



Base House Width = 30' (see lot sheets, MHW)
 Finished Square Footage = 916 Sq. Ft.
 Slab on Grade

The Today Series Standard Specifications

STANDARD FEATURES:

- Telephone Pre-wiring (category 5 cable, 8 lines)
- Cable T.V. Pre-wiring
- Simulated Oak Doors & Trim
- Oak Kitchen Cabinets
- Stainless Steel Double Kitchen Sink
- Fiberglass Bath Bay with Shower
- 200 Amp Electrical Service
- Ground Fault Protected Exterior Outlets
- Yard Backfilled and Graded
- Maintenance-Free Soffit, Fascia & Ridge Vent
- Pre-finished Rain Gutters and Downspouts
- Maintenance-Free Vinyl Siding

ENERGY FEATURES:

- R-19 Walls, R-50 Ceilings
- Insulated Maintenance-Free Windows
- Quiet, 100% Efficient Elec. Baseboard Heat
- Superior Air Tight Construction
- Insulated Permanent Wood Foundation
- Limited Use of Ceiling Light Fixtures for Energy Savings
- Continuous Ceiling & Exterior Wall Vapor Barrier
- Automatic Sewer Check Valve to Prevent Back-Up
- Air-Exhaust System for Moisture and Air Quality Control
- Energy Conserving Water Heater
- Insulated Steel Panel Garage Door
- Insulated Metal Entrance Doors

CUSTOMER SELECTION ITEMS

- Light Fixture Package
- Interior Color Package

SPECIAL CERTIFICATIONS

- Ten Year Residential Warranty (RWC)
- Approved for FHA/VA Loans
- More than 5000 homes built since 1951
- "Builder of the Year" honors in North Dakota

